

REVISIONS

LTR	DESCRIPTION	DATE (YR-MO-DA)	APPROVED
—	PRODUCT BASELINE ERR OHEU6917	02-03-04	EB
A	REDRAWN WITH CHANGE ERR OHEU8419	03-03-06	RK
B	REVISED WITH CHANGE ERR OHEU8488	03-08-21	RK

NOTES:

1. APPLICABLE STANDARDS/SPECIFICATIONS:
 - A. DOD-STD-00100(AR)
2. CALLOUTS IDENTIFIED AS FOLLOWS:
 - * NEW PARTS INCLUDED IN KIT
 - # PARTS TO BE REMOVED AND DISCARDED
 - Δ PARTS TO BE REMOVED AND REUSED
3. ALL DIMENSIONS ARE IN INCHES
4. ALL TORQUE VALUES ARE ± 10%

**INSTALLATION INSTRUCTIONS
GUNNER SHIELD KIT
SECTION I. INTRODUCTION**

1-1. PURPOSE. THE PURPOSE OF THESE INSTRUCTIONS IS TO PROVIDE A PROCEDURE FOR INSTALLATION OF GUNNER SHIELD KIT ON 1-1/4 TON TRUCK, M1025, M1025A1, M1025A2, M1026, M1026A1, M1043, M1043A1, M1043A2, M1044, M1044A1, AND M1114.

REV STATUS OF SHEETS	REV	B	B	B	B	A	A	A	B	A	A	B	B			
	SHEET	1	2	3	4	5	6	7	8	9	10	11	12			

APPLICATION		CONTRACT NUMBER DAAE07-01-C-S105		U.S. ARMY TANK-AUTOMOTIVE COMMAND WARREN, MICHIGAN 48397-5000			
NEXT ASSY	USED ON	CONTRACTOR O'GARA-HESS & EISENHARDT ARMORING COMPANY FAIRFIELD, OHIO					
	M1025A2	DRAWN BY D. SPENCER	DATE (YR-MO-DA) 02-01-16	INSTALLATION INSTRUCTIONS, GUNNER SHIELD KIT 57K4470			
	M1026A1	CHECKER R. PANGANIBAN	ENGINEER B. POLAND				
	M1043A2	DRAWING APPROVAL W. GRAY 02-03-21					
	M1044A1	DESIGN APPROVAL R. KATRIB 02-03-21		SIZE A	CAGE CODE 19207	12484857	
57K4470	M1114			SCALE NONE		UNIT WT. _____	SHEET 1 OF 12
MATL ENGR							

SECTION II. INSTALLATION KIT

2-1. NEW MATERIAL. INSTALLATION KIT 57K4470 CONTAINS THE FOLLOWING ITEMS:

<u>PART NO.</u>	<u>NOMENCLATURE</u>	<u>QTY.</u>
12012065	HANDLE ASSY, LOCKING	1
12012067	PAWL, CLAMPING	1
12012071	SLEEVE, SPLIT	1
12484846	SHIELD, GUNNER	1
12484852	BRACKET, GUN SHIELD SUP	1
12484847	ADAPTER, PINTLE	1
12484848	LOCK, PINTLE	1
12484861-054	SCREW	4
12484861-055	SCREW	4
12484862-006	LOCKWASHER	2
12484862-008	LOCKWASHER	8
12484863-005	SCREW	2
12484864-005	NUT	8
5140237	SCREW	1
9421888	WASHER	8

2-2. EXISTING MATERIAL. ALL MATERIAL REMOVED AND NOT REUSED DURING INSTALLATION WILL BE RETURNED TO STOCK FOR DISPOSITION IN ACCORDANCE WITH AR 725-50.

2-3. THE FOLLOWING MATERIAL IS REQUIRED (PRIOR TO PERFORMING SECTION 3.6) FOR M1114 VEHICLES WITH LVOSS INSTALLED, BUT IS NOT INCLUDED IN KIT:

<u>PART NO.</u>	<u>NOMENCLATURE</u>	<u>QTY.</u>
12484854	SUB PLATE, LVOSS	2
12484861-031	SCREW	12
12484862-007	LOCKWASHER	12
12484864-003	NUT	12
24617-274865	WASHER	12

**INSTALLATION INSTRUCTIONS,
GUNNER SHIELD KIT 57K4470**

SIZE

A

CAGE CODE

19207

12484857

ERR OHEU8488

REVISION LEVEL

B

SHEET 2

SECTION III. INSTALLATION PROCEDURES

3-1. VEHICLE PREPARATION.

- A. APPLY VEHICLE PARKING BRAKE. (REFER TO TM 9-2320-387-10 OR TM 9-2320-280-10)
- B. REMOVE TRAVERSE ARM ASSEMBLY FROM OLD PINTLE ADAPTER AND RETAIN TO REINSTALL ON NEW PINTLE ADAPTER (12484847), OR ORDER PROPER TRAVERSE ARM ASSEMBLY FROM TM 9-1010-231-13&P. REFER TO FIGURE 3.

CAUTION

(FOR M1114 VEHICLES ONLY)

INSTALLING GUNNER SHIELD ON VEHICLES NOT EQUIPPED WITH A GEARED TURRET STOP RING AND BRAKE ASSEMBLY MAY RESULT IN DAMAGE TO EQUIPMENT.

- C. INSPECT VEHICLE FOR PRESENCE OF GEARED TURRET STOP RING AND BRAKE ASSEMBLY AS FOLLOWS: (M1114 ONLY)
 - 1. FROM INSIDE VEHICLE, LOOK UP AT TURRET ASSEMBLY AND DETERMINE IF A 4662415-002 GEARED TURRET STOP RING AND A 4662576-002 OR 1000545 BRAKE ASSEMBLY ARE INSTALLED AS SHOWN IN FIGURE 1.
 - 2. IF VEHICLE CONFIGURATION MATCHES GEARED TURRET STOP RING AND BRAKE ASSEMBLY AS SHOWN IN FIGURE 1, CONTINUE TO STEP 3-2.

NOTE

(M1025, M1025A1, M1025A2, M1026, M1026A1, M1043, M1043A1, M1043A2, M1044, OR M1044A1)

FOR VEHICLES BUILT PRIOR TO SERIAL NUMBER 189936, REPLACE THREE EXISTING TURRET LOCK RINGS WITH THREE 12340298 TURRET LOCK RINGS (REFER TO TM 9-2320-280-20).

WARNING

(M1025, M1025A1, M1025A2, M1026, M1026A1, M1043, M1043A1, M1043A2, M1044, OR M1044A1)

LVOSS MUST BE REMOVED TO PREVENT INTERFERENCE WITH GUNNER SHIELD.

3-2. GUNNER SHIELD ASSEMBLY. (ALL MODELS)

NOTE

INSTALLATION DIRECTION AND ORIENTATION OF CLAMPING PAWL IS CRITICAL TO PROPER OPERATION. ANGLED END OF CLAMPING PAWL MUST MATCH CONTOUR OF PINTLE ADAPTER FOR PROPER FIT AGAINST SPLIT SLEEVE.

INSTALLATION INSTRUCTIONS, GUNNER SHIELD KIT 57K4470	SIZE	CAGE CODE	12484857		
	A	19207			
ERR OHEU8488		REVISION LEVEL	B	SHEET 3	

- A. INSTALL 12012067 CLAMPING PAWL INTO 12484847 PINTLE ADAPTER AND ENSURE ANGLED END OF CLAMPING PAWL MATCHES CONTOUR OF PINTLE ADAPTER AS SHOWN IN FIGURE 2.
- B. INSTALL 12012071 SPLIT SLEEVE ONTO PINTLE ADAPTER AND SECURE WITH 5140237 SCREW AS SHOWN IN FIGURE 2.
- C. INSTALL 12012065 LOCKING HANDLE ASSEMBLY INTO PINTLE ADAPTER AS SHOWN IN FIGURE 2. DO NOT TIGHTEN LOCKING HANDLE ASSEMBLY.

WARNING

GUNNER SHIELD IS EXTREMELY HEAVY AND MUST BE SUPPORTED DURING ASSEMBLY AND INSTALLATION. FAILURE TO DO SO MAY RESULT IN INJURY TO PERSONNEL OR DAMAGE TO EQUIPMENT.

- D. INSTALL 12484846 GUNNER SHIELD ONTO 12484852 GUNNER SHIELD SUPPORT BRACKET AND SECURE WITH FOUR 12484861-054 SCREWS, 9421888 WASHERS, 12484862-008 LOCKWASHERS, AND 12484864-005 NUTS AS SHOWN IN FIGURE 2. TIGHTEN SCREWS TO 37 LB-FT (50.2 N·m).
 - E. INSTALL 12484847 PINTLE ADAPTER ONTO 12484852 GUNNER SHIELD SUPPORT BRACKET AND SECURE WITH FOUR 12484861-055 SCREWS, 9421888 WASHERS, 12484862-008 LOCKWASHERS, AND 12484864-005 NUTS AS SHOWN IN FIGURE 2. TIGHTEN SCREWS TO 37 LB-FT (50.2 N·m).
- 3-3. INSTALL GUNNER SHIELD ASSEMBLY INTO VEHICLE PINTLE ADAPTER AND SECURE WITH BOTTOM SET SCREW(S) AS SHOWN IN FIGURE 3.
- 3-4. INSTALL TRAVERSE ARM ASSEMBLY ON NEW PINTLE ADAPTER (12484847) AS SHOWN IN FIGURE 3. REFER TO TM 9-1010-231-13&P.
- 3-5. WHEN THE M197 WEAPON MOUNT IS USED, INSTALL 12484848 PINTLE LOCK ONTO M197 WEAPON MOUNT AND SECURE WITH TWO 12484863-005 SCREWS AND 12484862-006 LOCKWASHERS AS SHOWN IN FIGURE 4. TIGHTEN SCREWS TO 10 LB-FT (13.5 N·m). PINTLE LOCK IS USED WITH M197 WEAPON MOUNT WITH M240 AND M249 WEAPONS. ENSURE WEAPON ROTATES WITH GUNNER SHIELD AFTER INSTALLATION.
- 3-6. IF VEHICLE IS EQUIPPED WITH LVOSS, INSTALL LVOSS SUB PLATES AS FOLLOWS. (FOR M1114 ONLY) (SEE PARAGRAPH 2-3.)
- A. NOTE EXACT ORIENTATION OF DRIVER SIDE FRONT AND PASSENGER SIDE FRONT LVOSS UNITS.
 - B. DISCONNECT ELECTRICAL CONNECTORS FROM FRONT LVOSS UNITS.
 - C. REMOVE FOUR NUTS AND SCREWS SECURING DRIVER SIDE FRONT LVOSS UNIT TO ROOF BRACKET AS SHOWN IN FIGURE 5. DISCARD NUTS AND SCREWS.
 - D. REMOVE FOUR NUTS AND SCREWS SECURING PASSENGER SIDE FRONT LVOSS UNIT TO ROOF BRACKET AS SHOWN IN FIGURE 5. DISCARD NUTS AND SCREWS.
 - E. INSTALL 12484854 LVOSS SUB PLATE ON DRIVER SIDE ROOF BRACKET. ENSURE "FRONT DRIVER SIDE" NOTE ON SUB PLATE IS FACING FORWARD AND UPWARD. SECURE WITH TWO 12484861-031 SCREWS, 274865 WASHERS, 12484862-007 LOCKWASHERS, AND 12484864-003 NUTS IN REAR MOUNTING HOLES ONLY. REFER TO FIGURE 6.

**INSTALLATION INSTRUCTIONS,
GUNNER SHIELD KIT 57K4470**

SIZE

A

CAGE CODE

19207

12484857

ERR OHEU8488

REVISION LEVEL

B

SHEET 4

- F. ENSURE DRIVER SIDE FRONT LVOSS UNIT IS ORIENTED PROPERLY, AND SECURE TO 12484854 LVOSS SUB PLATE WITH FOUR 12484861-031 SCREWS, 274865 WASHERS, 12484862-007 LOCKWASHERS, AND 12484864-003 NUTS AS SHOWN IN FIGURE 6. TIGHTEN SIX 12484861-031 SCREWS TO 21 LB-FT (28.5 N·m).
- G. INSTALL 12484854 LVOSS SUB PLATE ON PASSENGER SIDE ROOF BRACKET. ENSURE "FRONT PASSENGER SIDE" NOTE ON SUB PLATE IS FACING FORWARD AND UPWARD. SECURE WITH TWO 12484861-031 SCREWS, 274865 WASHERS, 12484862-007 LOCKWASHERS, AND 12484864-003 NUTS IN REAR MOUNTING HOLES ONLY. REFER TO FIGURE 7.
- H. ENSURE PASSENGER SIDE FRONT LVOSS UNIT IS ORIENTED PROPERLY, AND SECURE TO 12484854 LVOSS SUB PLATE WITH FOUR 12484861-031 SCREWS, 274865 WASHERS, 12484862-007 LOCKWASHERS, AND 12484864-003 NUTS AS SHOWN IN FIGURE 7. TIGHTEN SIX 12484861-031 SCREWS TO 21 LB-FT (28.5 N·m).
- I. RECONNECT ELECTRICAL CONNECTORS TO FRONT LVOSS UNITS.

INSTALLATION INSTRUCTIONS, GUNNER SHIELD KIT 57K4470	SIZE A	CAGE CODE 19207	12484857		
	ERR OHEU8419		REVISION LEVEL	A	SHEET 5

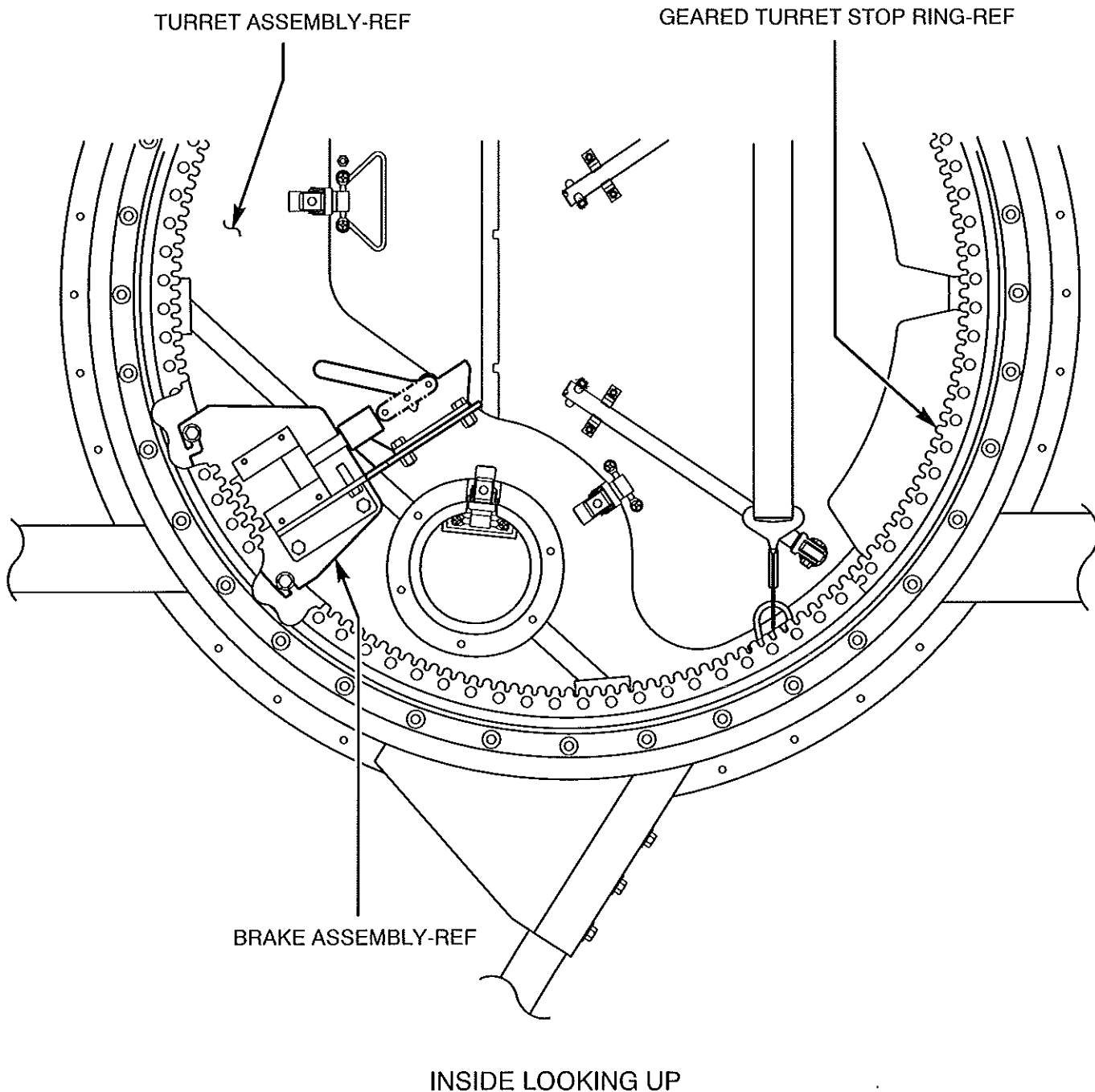


FIGURE 1
(FOR M1114 VEHICLES ONLY)

INSTALLATION INSTRUCTIONS,
GUNNER SHIELD KIT 57K4470

SIZE
A

CAGE CODE
19207

12484857

ERR OHEU8419

REVISION LEVEL

A

SHEET 6

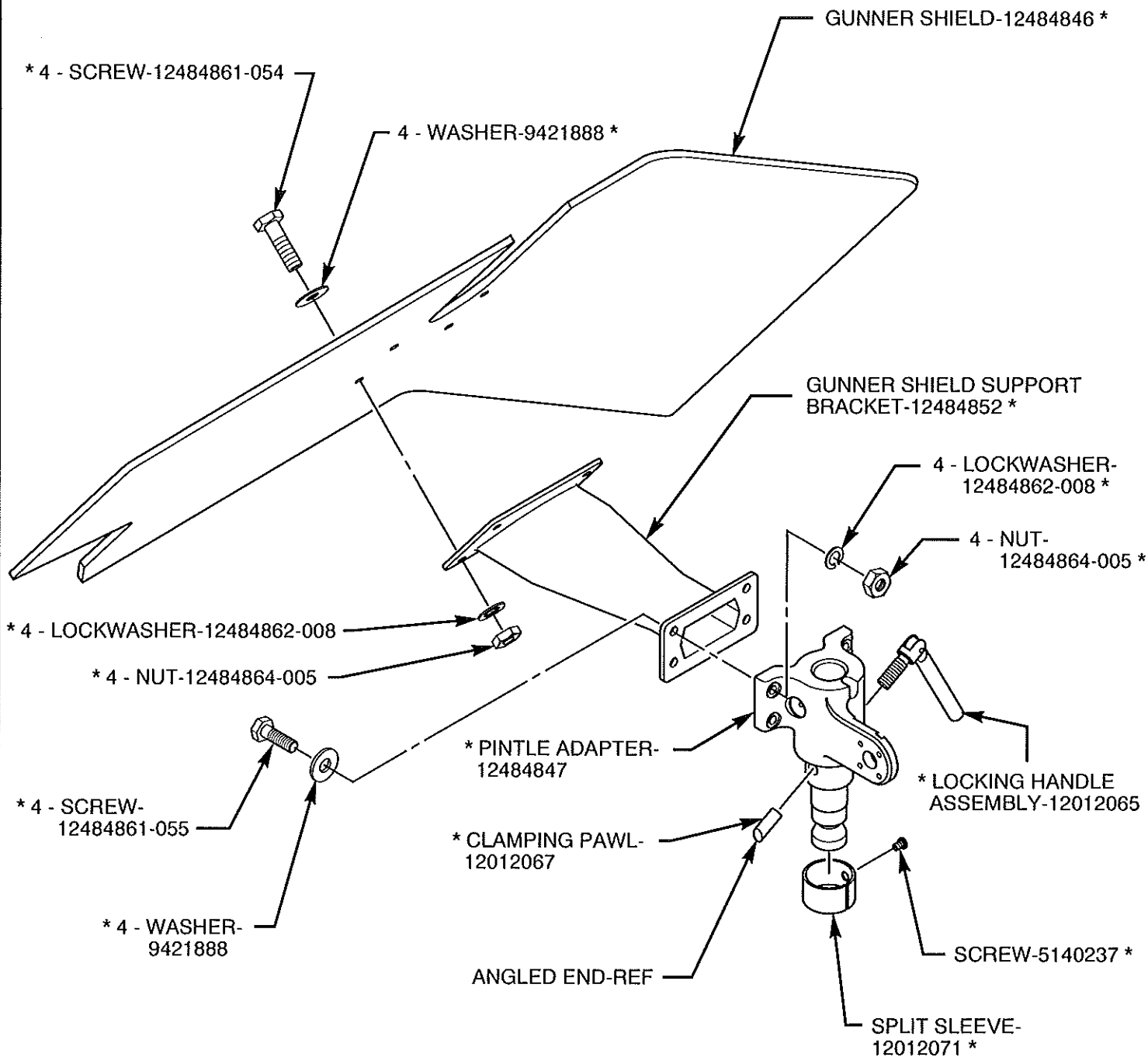


FIGURE 2

INSTALLATION INSTRUCTIONS,
GUNNER SHIELD KIT 57K4470

SIZE
A

CAGE CODE
19207

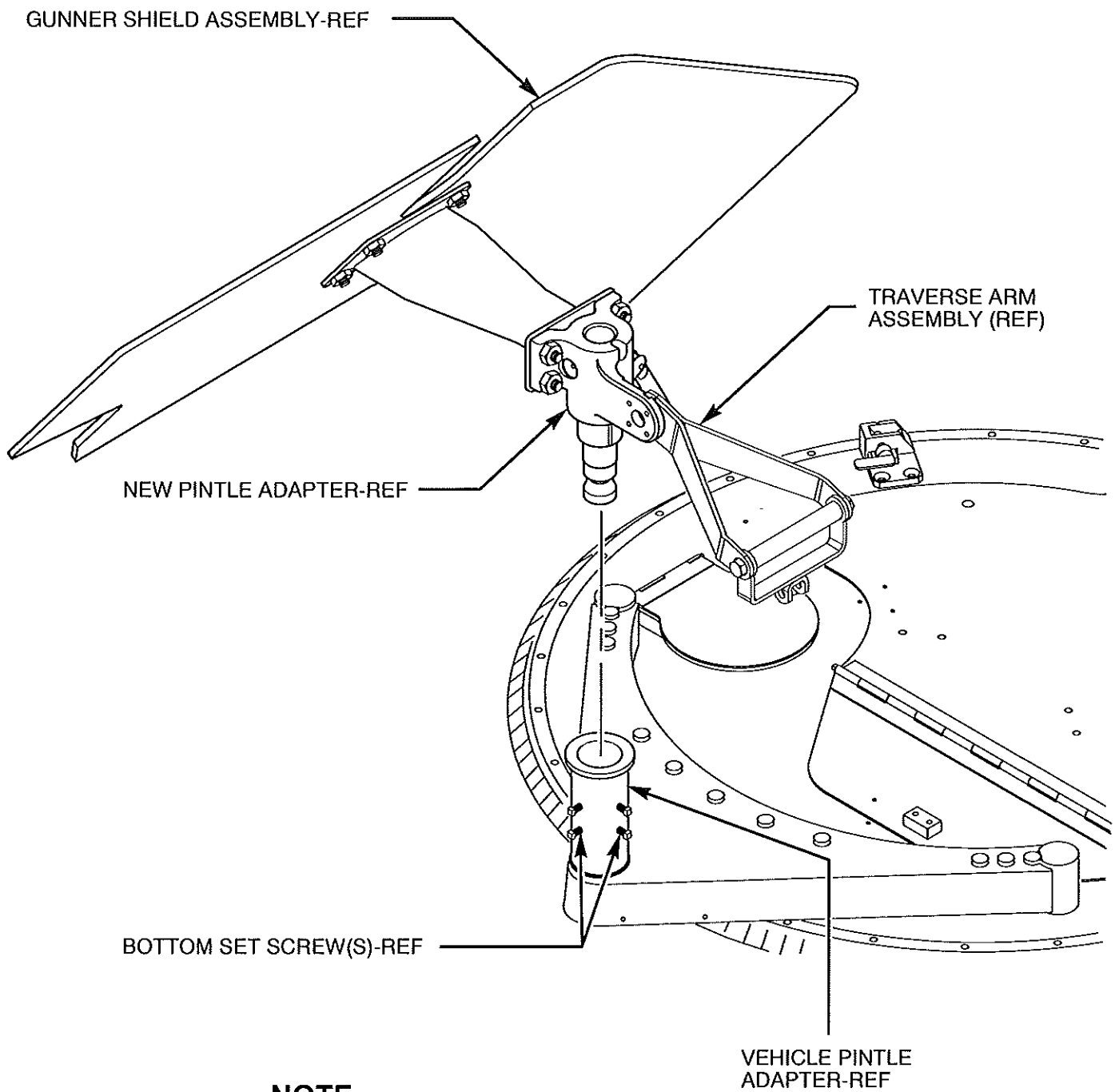
12484857

ERR OHEU8419

REVISION LEVEL

A

SHEET 7



NOTE

REMOVE TRAVERSE ARM ASSEMBLY FROM OLD PINTLE ADAPTER AND INSTALL ON NEW PINTLE ADAPTER.

FIGURE 3

**INSTALLATION INSTRUCTIONS,
GUNNER SHIELD KIT 57K4470**

SIZE
A

CAGE CODE
19207

12484857

ERR OHEU8488

REVISION LEVEL

B

SHEET 8

NOTE

PINTLE LOCK IS USED WITH M197 WEAPON MOUNT WITH M240 AND M249 WEAPONS. ENSURE WEAPON ROTATES WITH GUNNER SHIELD AFTER INSTALLATION.

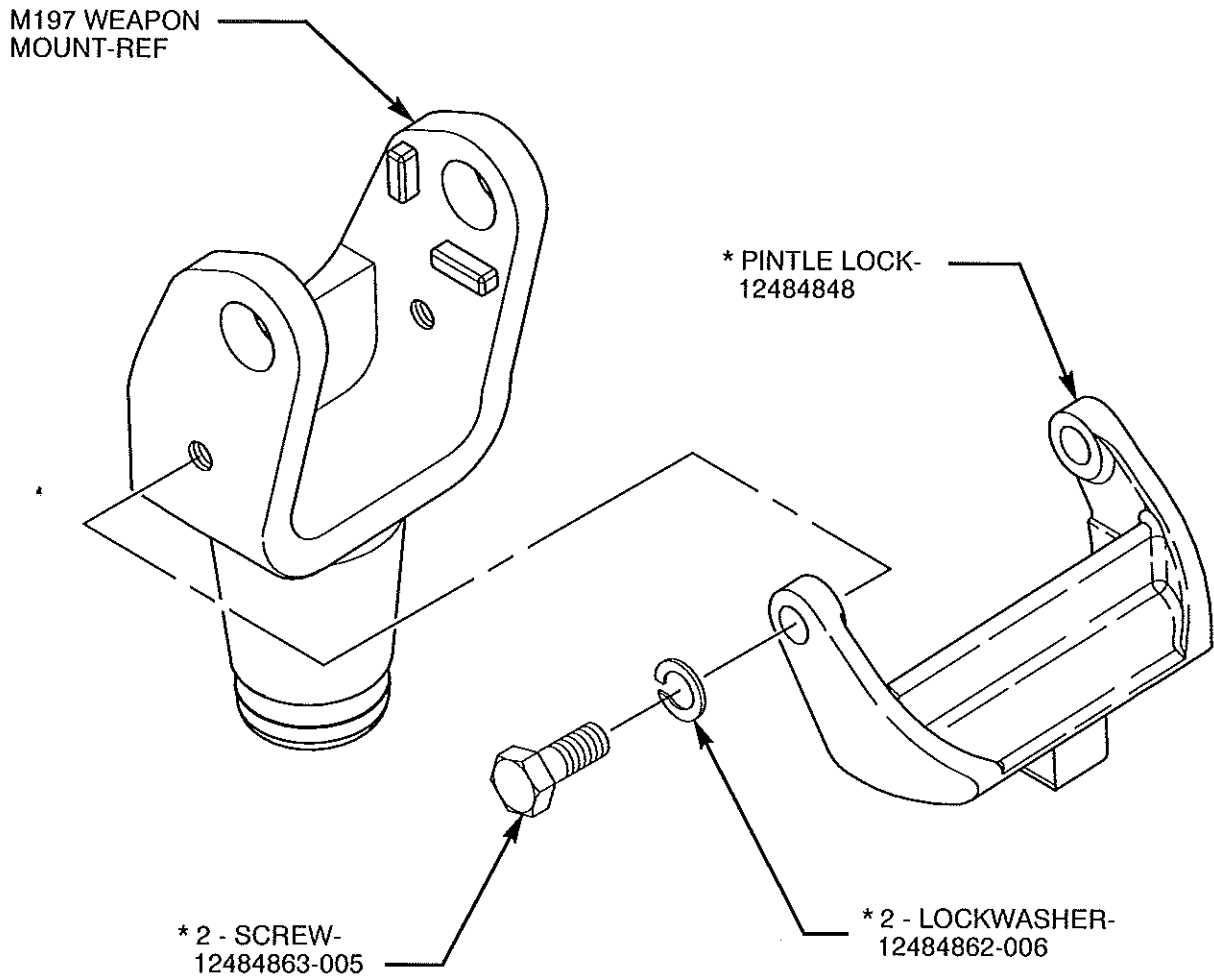


FIGURE 4

INSTALLATION INSTRUCTIONS,
GUNNER SHIELD KIT 57K4470

SIZE
A

CAGE CODE
19207

12484857

ERR OHEU8419

REVISION LEVEL

A

SHEET 9

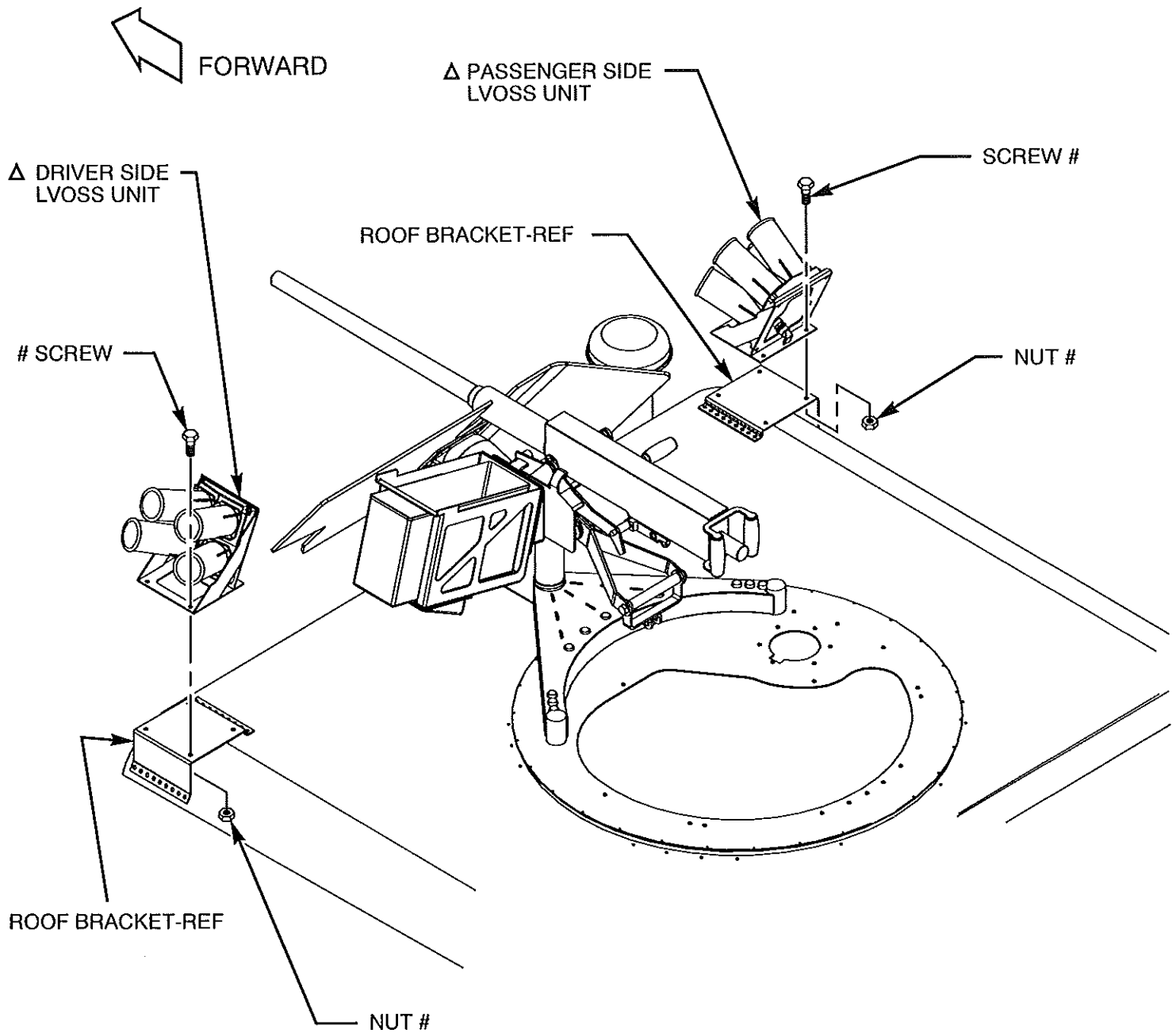


FIGURE 5
(FOR M114 VEHICLES ONLY)

**INSTALLATION INSTRUCTIONS,
GUNNER SHIELD KIT 57K4470**

SIZE
A

CAGE CODE
19207

12484857

ERR OHEU8419

REVISION LEVEL

A

SHEET 10

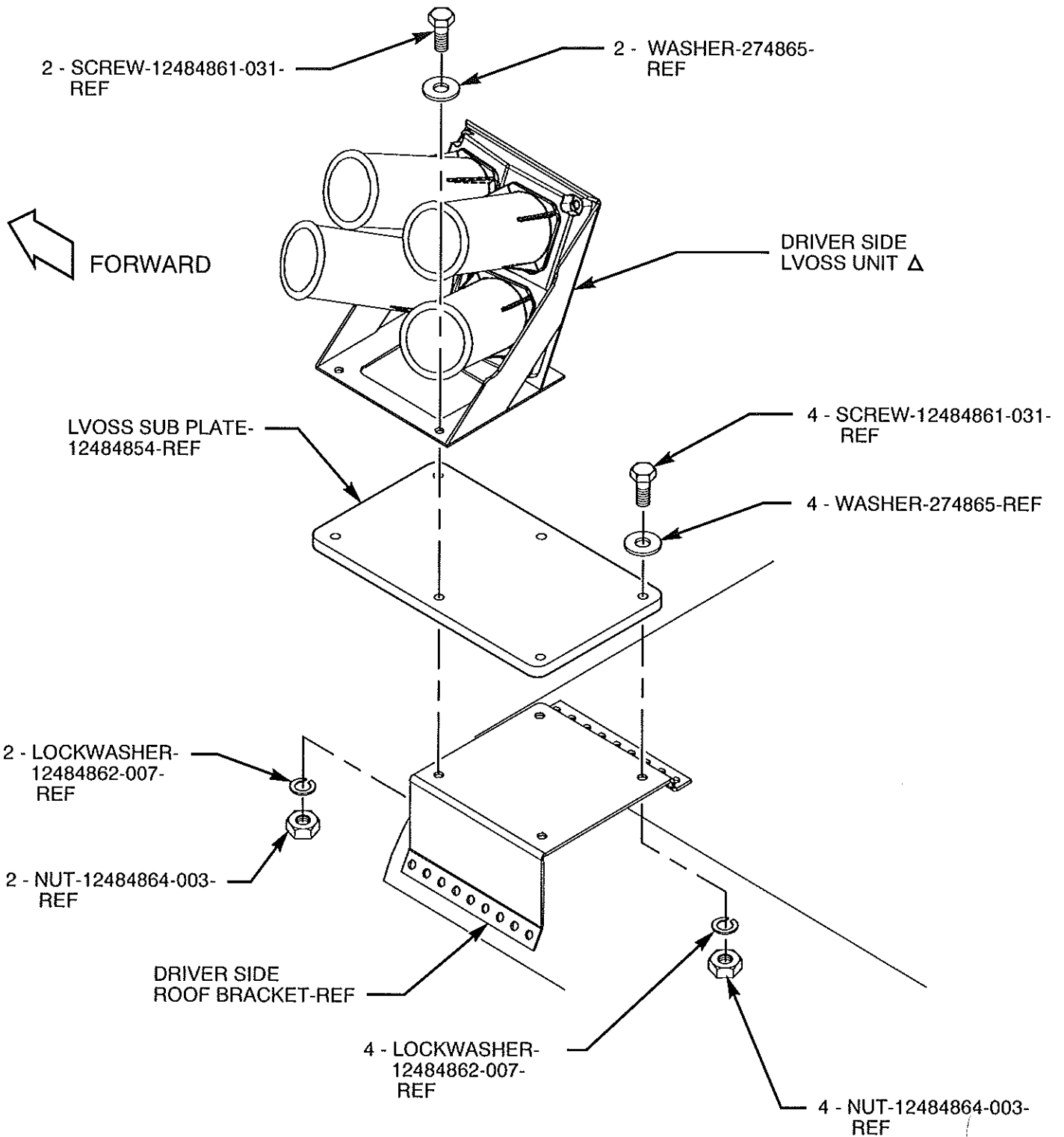


FIGURE 6
(FOR M114 VEHICLES ONLY)

INSTALLATION INSTRUCTIONS,
GUNNER SHIELD KIT 57K4470

SIZE
A

CAGE CODE
19207

12484857

ERR OHEU8488

REVISION LEVEL

B

SHEET 11

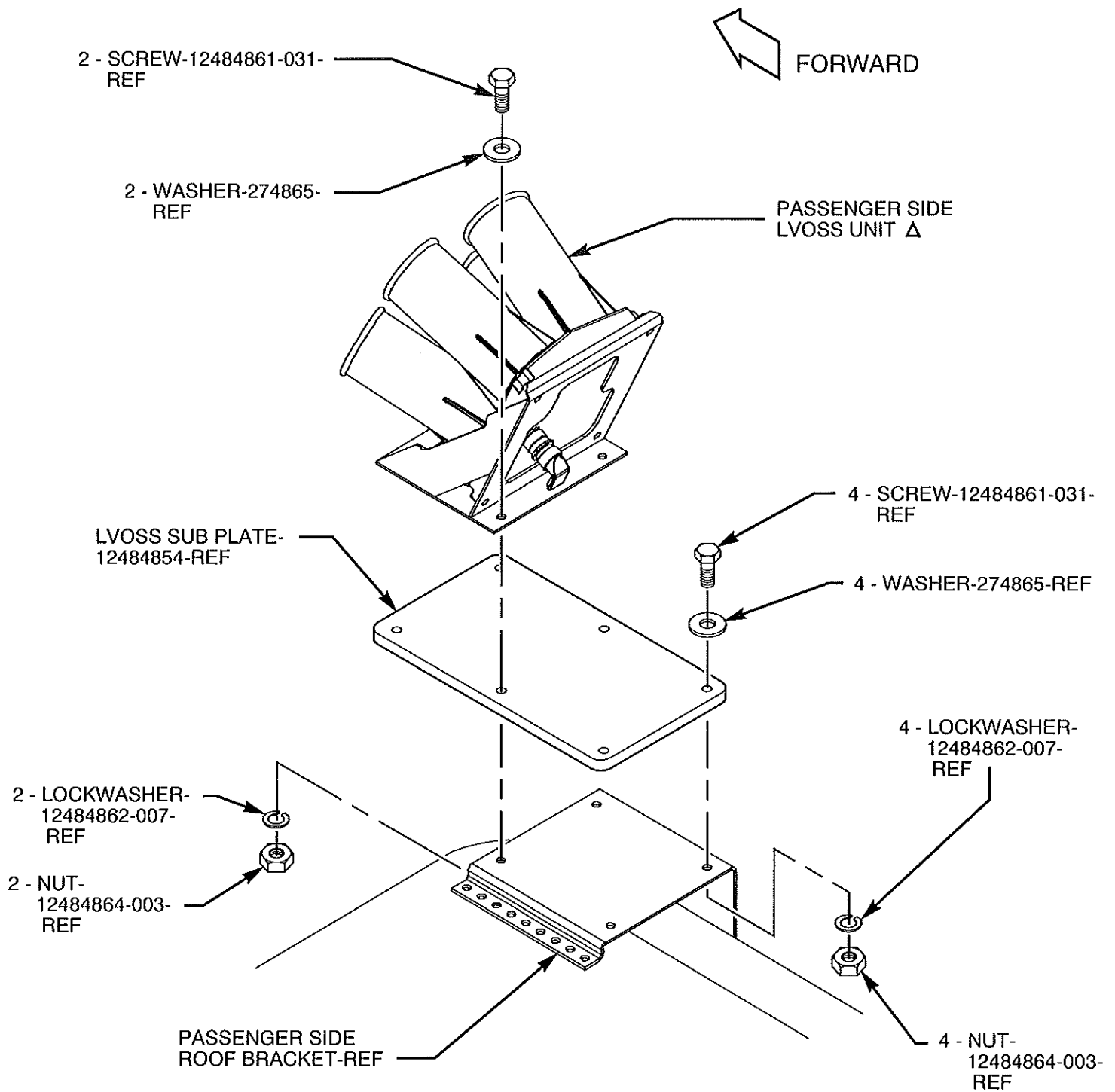


FIGURE 7
(FOR M114 VEHICLES ONLY)

INSTALLATION INSTRUCTIONS,
GUNNER SHIELD KIT 57K4470

SIZE
A

CAGE CODE
19207

12484857

ERR OHEU8488

REVISION LEVEL

B

SHEET 12